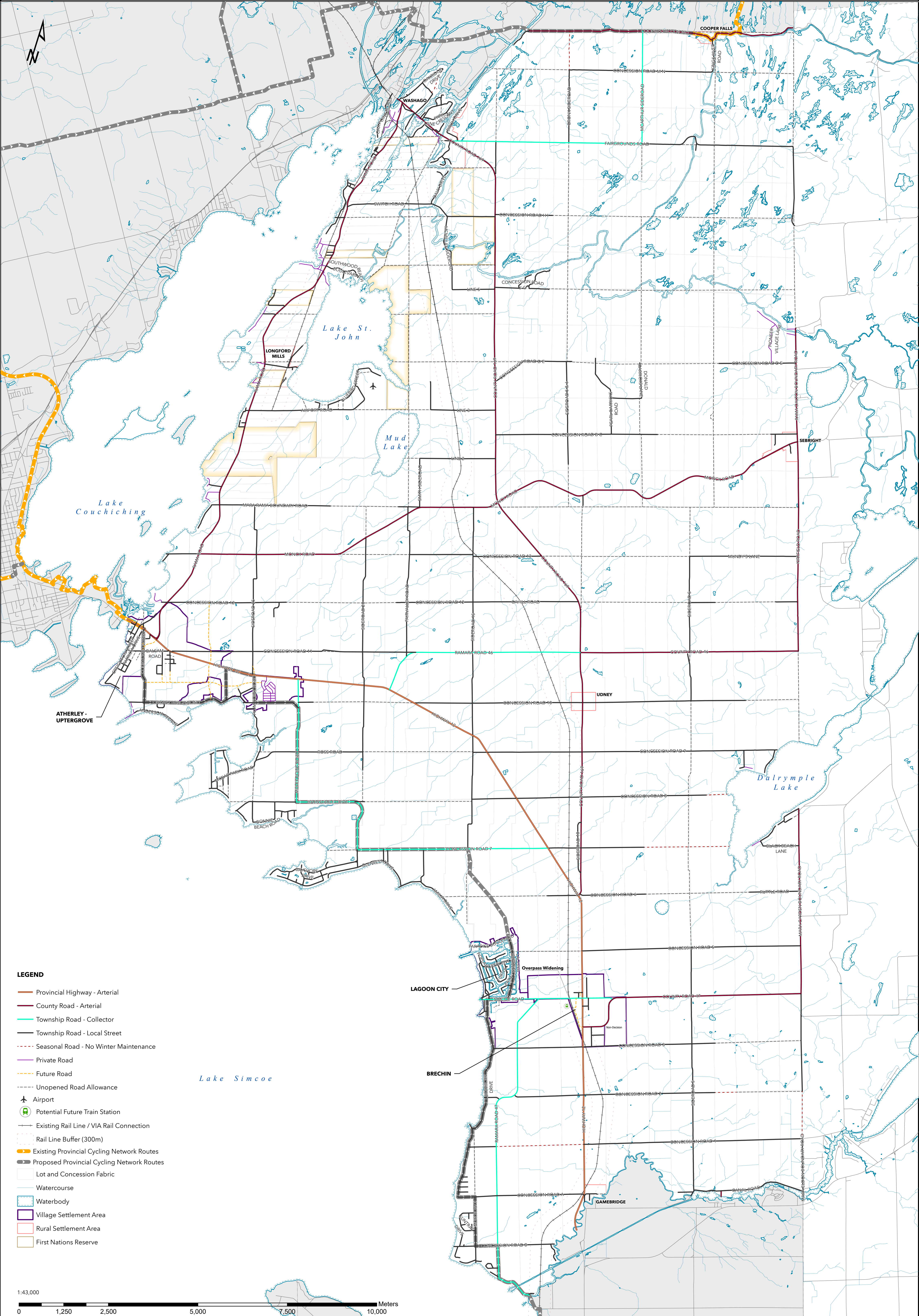


THE TOWNSHIP OF RAMARA OFFICIAL PLAN

SCHEDULE "F" - TRANSPORTATION

Modified by the County of Simcoe

Date Exported: 2026-01-22



- LEGEND**
- Provincial Highway - Arterial
 - County Road - Arterial
 - Township Road - Collector
 - Township Road - Local Street
 - - - Seasonal Road - No Winter Maintenance
 - Private Road
 - - - Future Road
 - - - Unopened Road Allowance
 - Airport
 - Potential Future Train Station
 - Existing Rail Line / VIA Rail Connection
 - - - Rail Line Buffer (300m)
 - Existing Provincial Cycling Network Routes
 - Proposed Provincial Cycling Network Routes
 - Lot and Concession Fabric
 - Watercourse
 - Waterbody
 - Village Settlement Area
 - Rural Settlement Area
 - First Nations Reserve

1:43,000

0 1,250 2,500 5,000 7,500 10,000 Meters